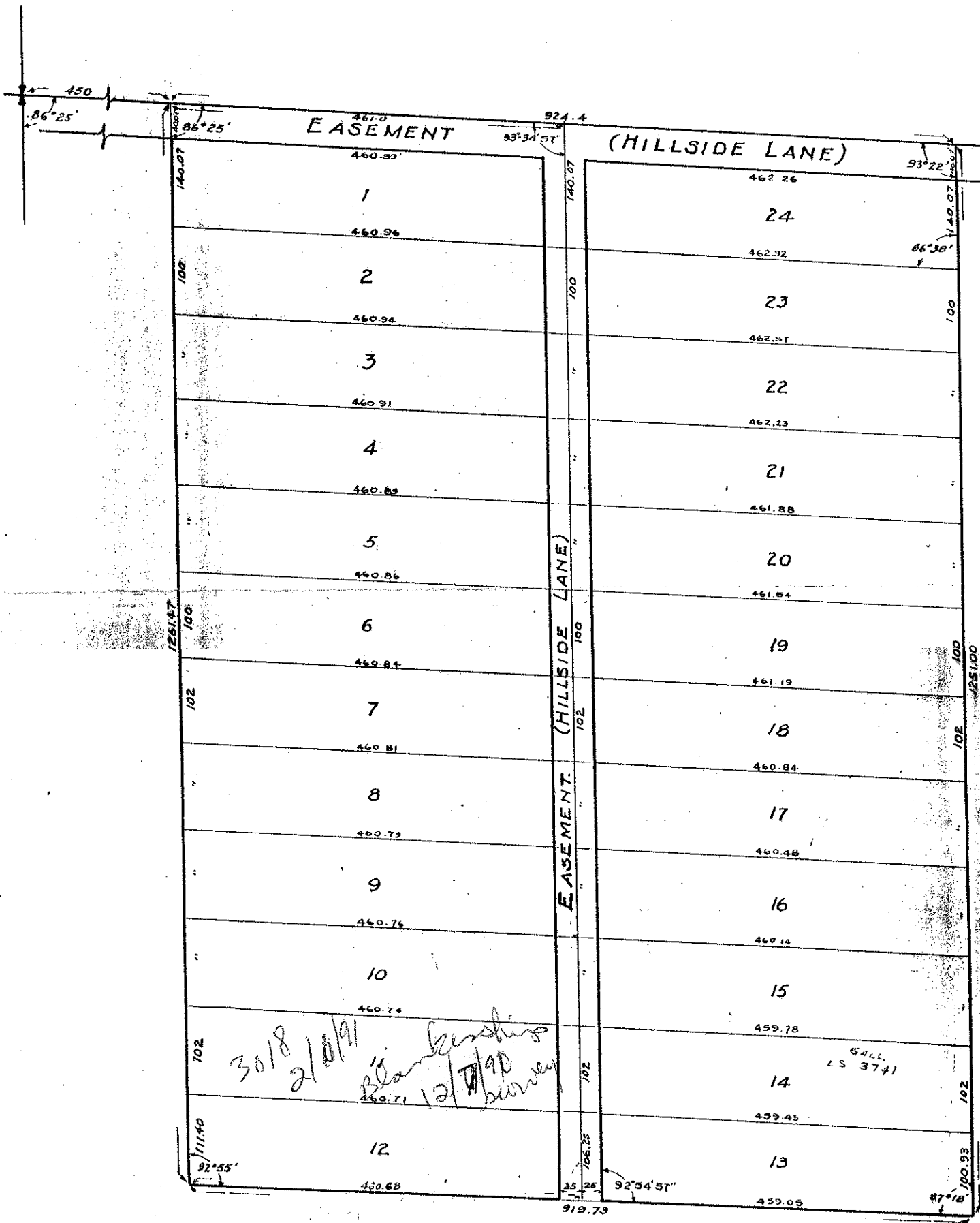


# HILLSIDE GARDENS.

IN SEC 4 TWP 45 S R 43 E,  
PALM BEACH COUNTY - FLORIDA.  
CHESTER F. WRIGHT ENGINEER & SURVEYOR  
LAKE WORTH - FLORIDA.



Scale 1" = 100'

NOTE:  
LOT DIMENSIONS ARE TO  
CENTER LINE OF HILLSIDE LANE.

I HEREBY CERTIFY that the NW 1/4 of the S.W. 1/4 of Section 4, Twp 45 S, R 43 E, less the west 450 feet and also less the south 127.35 feet of same, was surveyed under my direction on May 11 to 14 incl. 1953, and that the measurements shown hereon are true and correct to the best of my knowledge and belief. There are no encroachments involved.

*Chester F. Wright*  
CHESTER F. WRIGHT  
Registered Engineer & Surveyor,  
Florida Certificates 472-165,  
Lake Worth, Florida.

December 3, 1953

*3018  
2/10/91  
Blankenship  
12/17/90  
survey*

CALL  
LS 3741

ur0310.igr  
HILLSIDE GARDENS 4/45/43

49/4/3

D2-752 + D3-227  
D2-952